

# New Carrollton Metro East-Side Kiss & Ride

## Interstate-495/95, Exit 19B & US-50/John Hanson Highway

### DIRECTIONS:

The East-Side New Carrollton Metro Parking is west of the Beltway/I-495/95, north of John Hanson Hwy/US-50, and accessed from Garden City Dr. There is good signage (w/ white background) for the New Carrollton Metro station as you approach it from all 4 directions below.

**From EASTBOUND US-50:** Take Exit 5, turn right on MD-410/East-West Hwy eastbound. Turn left on Pennsy Dr. Cross Ardwick Ardmore Rd. Turn left at the traffic light onto Corporate Dr. Turn left at the traffic light onto Garden City Dr. Turn right to Metro KISS & RIDE parking.

**From WESTBOUND US-50:** Take Exit 6 onto Garden City Drive. Turn LEFT at the first traffic light to Metro Kiss and Ride Parking.

**From NORTHBOUND I-495/95 (Beltway Outer Loop):** Take Exit 19B onto US-50 West. Exit 6 (Garden City Dr/ Metro) becomes Garden City Dr. Turn left to Metro KISS & RIDE parking.

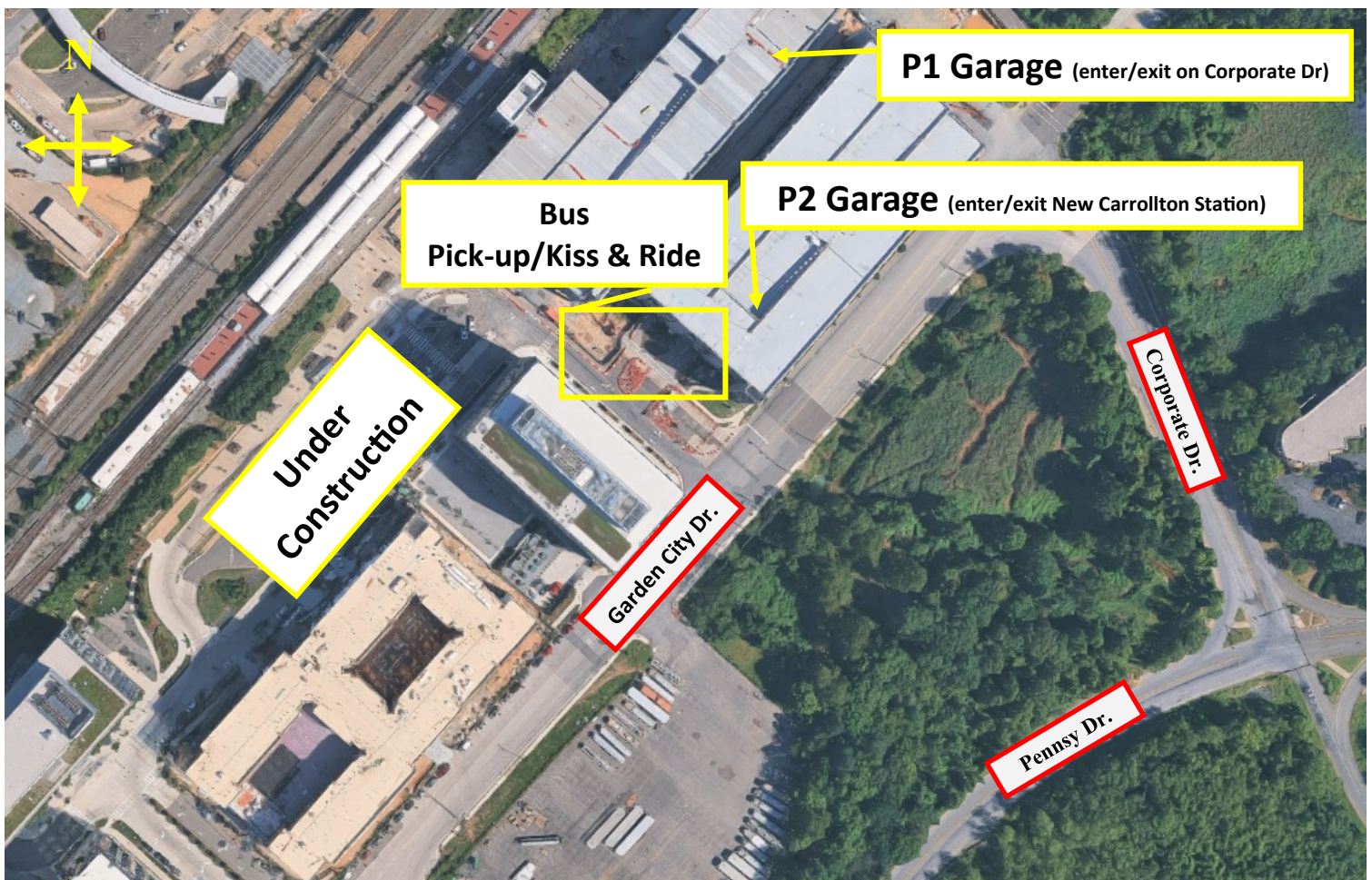
**From SOUTHBOUND I-495/95 (Beltway Inner Loop):** Take Exit 19B for US-50 West towards Washington. On the exit ramp, take right lane for Metro. At the end of the ramp go through the traffic light following the signs for Metro. Turn left at the traffic light onto Garden City Dr. Turn right to Metro KISS & RIDE parking.

### PARKING:

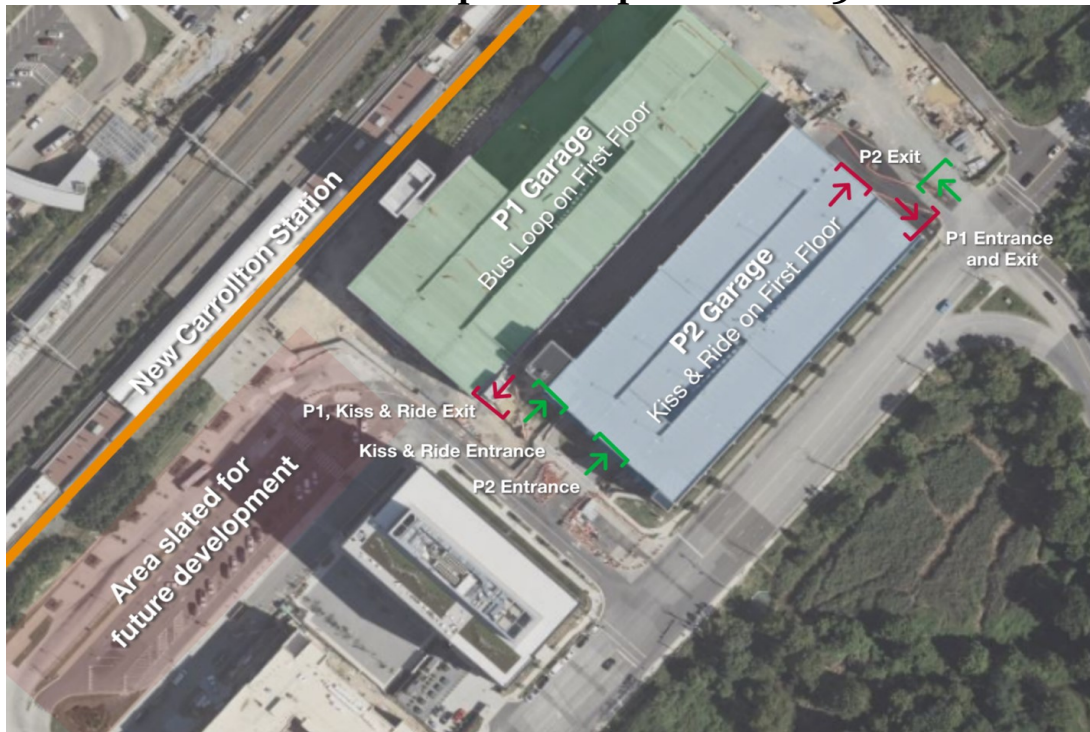
Parking at Metro-operated lots is free on weekends and federal holidays. For weekday parking information please visit [www.wmata.com](http://www.wmata.com) or call Metro Customer Information at 202.637.7000.

### BUS PICK-UP:

Wait for the EYRE bus outside of the parking garages. See WMATA construction map on next page for Kiss and Ride entrance and exit information.



## Construction Update: September 2025



Due to ongoing construction within the New Carrollton parking garage, customers may experience delays, congestion, and changes to travel patterns upon exiting. For your safety, please review and follow all posted signage and construction notices. Advisory in effect until 12/31/2026.

The P2 parking garage (located off Garden City Drive and New Carrollton Station) is open as of Monday, September 8th, 2025, giving customers access to both parking garages at New Carrollton Metro Station.

Pickup/drop off activities should only take place in the Kiss and Ride located off Garden City and New Carrollton Station, please follow the posted signage.

Customers can access and exit the new P1 Garage via Garden City and Corporate Drive. There are two exit points in the garage, with the second exit on level 2 center aisle.

Beginning the week of September 9, 2024, a portion of the Park & Ride Lot along Ellin Road will close to conduct bus operations. All accessible and reserved parking spaces will be relocated to a new area of the Park & Ride Lot, while some regular parking spaces will be closed long-term.

Effective Sunday, October 27, 2024, the Kiss & Ride Lot along Ellin Road will close for approximately one year. Customers using the Kiss & Ride for pickup and drop off activities should use the Kiss & Ride Lot on the Garden City Dr side of the station.

Effective Sunday, November 17-30, 2024, the Park & Ride Lot will close for improvements. Parking will be available at the garage on Garden City Dr.

For more information, visit: <https://www.wmata.com/service/status/details/New-Carrollton-Joint-Development-Customer-Info.cfm>