

# Norfolk Botanical Gardens

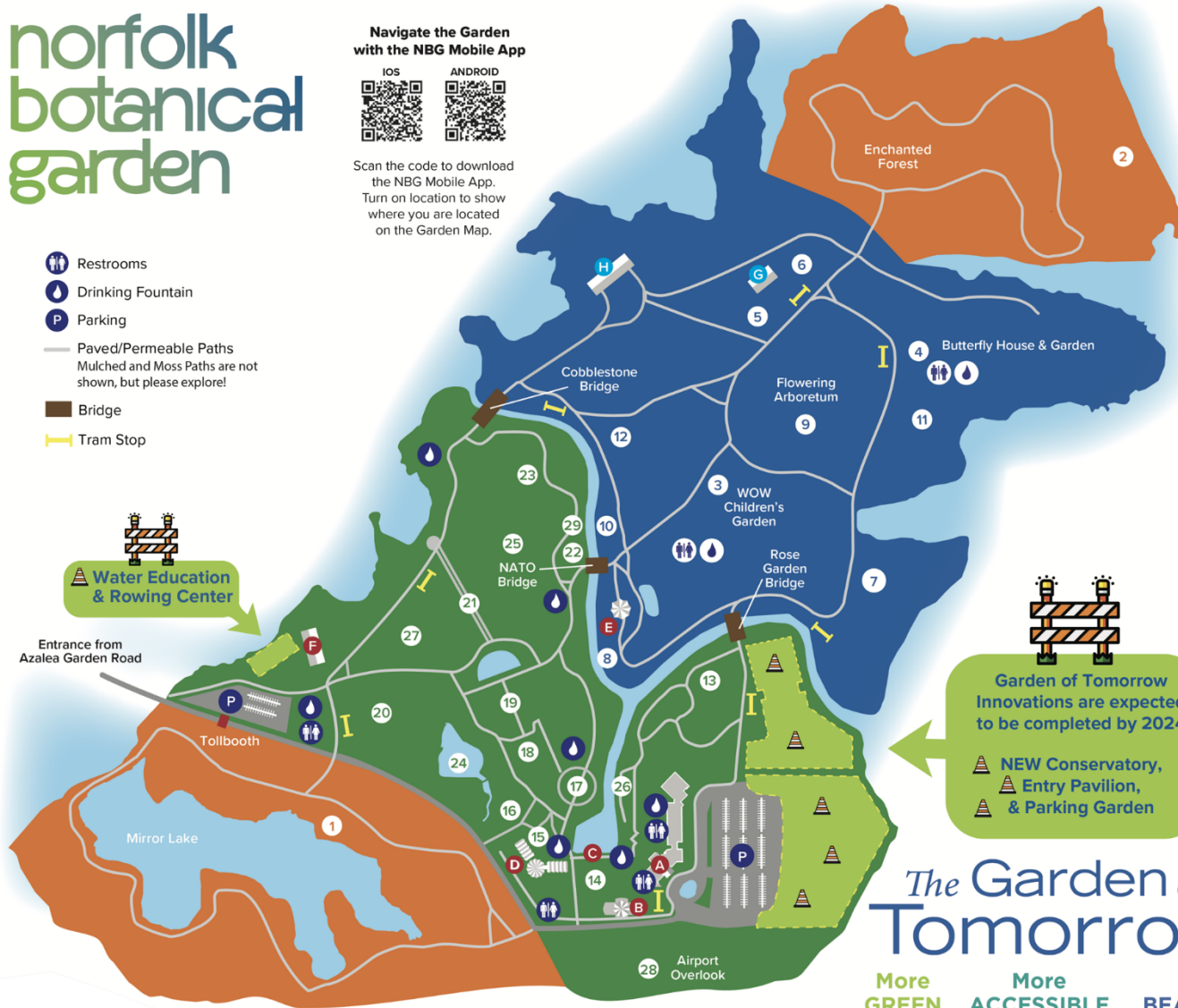
**norfolk botanical garden**

Navigate the Garden with the NBG Mobile App



Scan the code to download the NBG Mobile App. Turn on location to show where you are located on the Garden Map.

- Restrooms
- Drinking Fountain
- Parking
- Paved/Permeable Paths  
Mulched and Moss Paths are not shown, but please explore!
- Bridge
- Tram Stop



**GARDENS FOR EXPLORATION**

- 1 Mirror Lake & WPA Memorial Garden
- 2 Enchanted Forest

**GARDENS FOR LEARNING**

- 3 World of Wonders Children's Garden
- 4 Butterfly Garden & Butterfly House
- 5 Potager Kitchen Garden
- 6 O'Connor Grain & Hop Garden
- 7 Virginia Native Plant Garden
- 8 Subtropical Garden & Eagle Plaza
- 9 Flowering Arboretum
- 10 Conifer Garden
- 11 Wildflower Meadow
- 12 Baker Overlook

**GARDENS FOR DISPLAY**

- 13 The Margaret Moore Hall Rose Garden
- 14 Japanese Garden
- 15 Sunken Garden & Fragrance Garden
- 16 Kaufman Hydrangea Garden
- 17 Sarah Lee Baker Perennial Garden
- 18 Holly Garden & Turner Sculpture Gallery
- 19 Renaissance Court
- 20 Hofheimer Camellia Garden
- 21 Moses Ezekiel Statuary Vista
- 22 Hunter Savage Colonial Garden
- 23 Reflection Garden
- 24 Friendship Pond
- 25 The Glade
- 26 Canal Walk Garden
- 27 Rhododendron Garden
- 28 Airport Overlook
- 29 Le Jardin

**BUILDINGS AND POINTS OF INTEREST**

- A Baker Hall Visitor Center, Education Center & Rose Garden Hall
- B Café & Conservatory
- C Boat Basin
- D Administration Building
- E NATO Tower
- F Picnic Shelter
- Not Open to the Public**
- G Greenhouse
- H Maintenance

*The Garden of Tomorrow*

More GREEN More ACCESSIBLE More BEAUTIFUL

Help Us BUILD & PLANT The Garden of Tomorrow!



Learn More

Visit us at [norfolkbotanicalgarden.org](http://norfolkbotanicalgarden.org)

# Singapore Botanic Gardens

