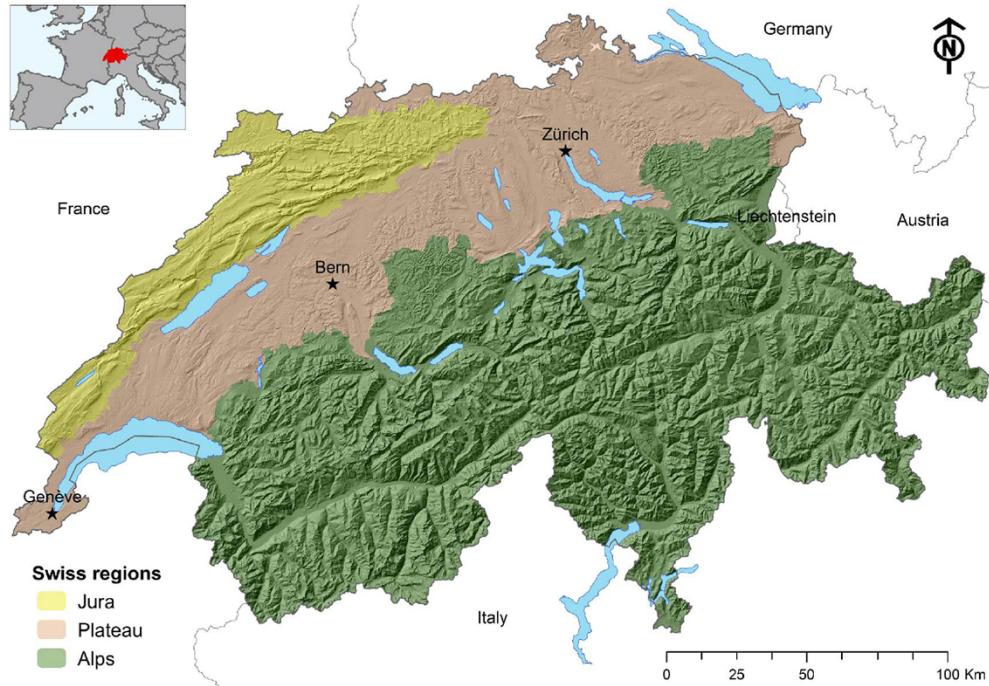
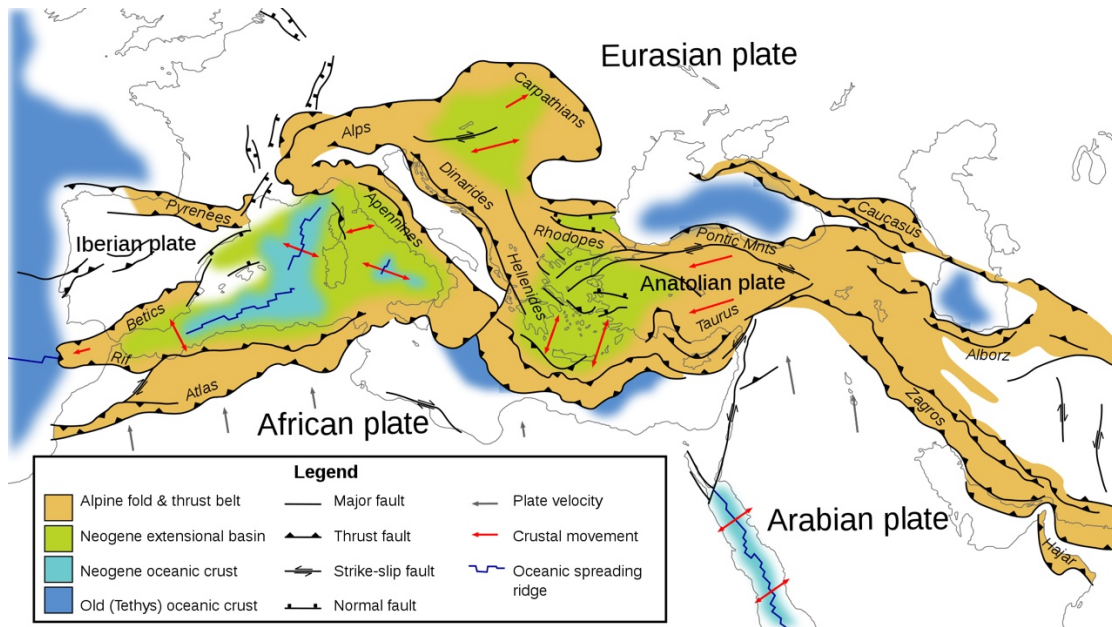


# A Geologic Tour of Switzerland

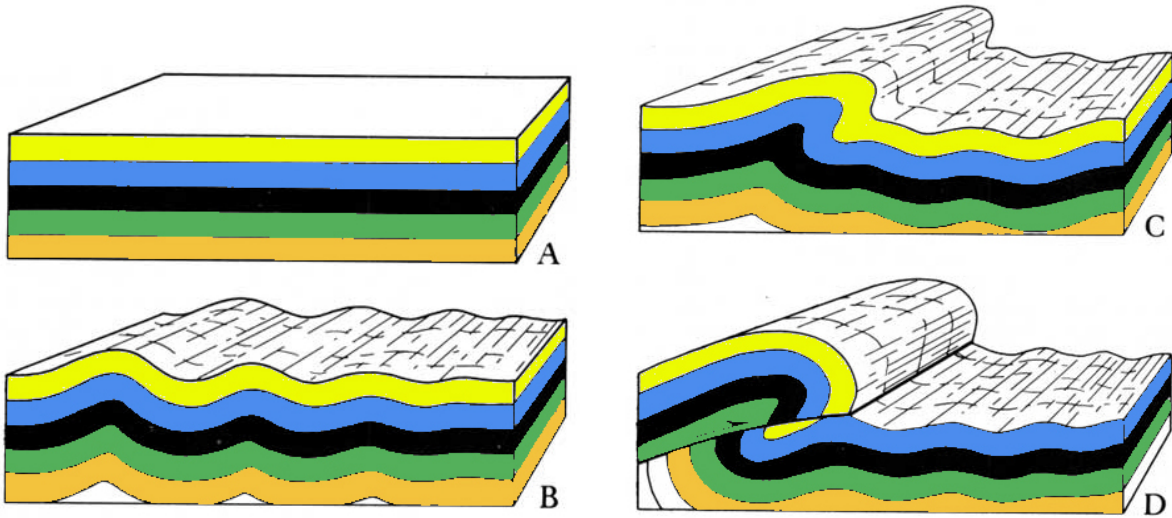
(a few diagrams from the presentation)



Basic geographic provinces of Switzerland

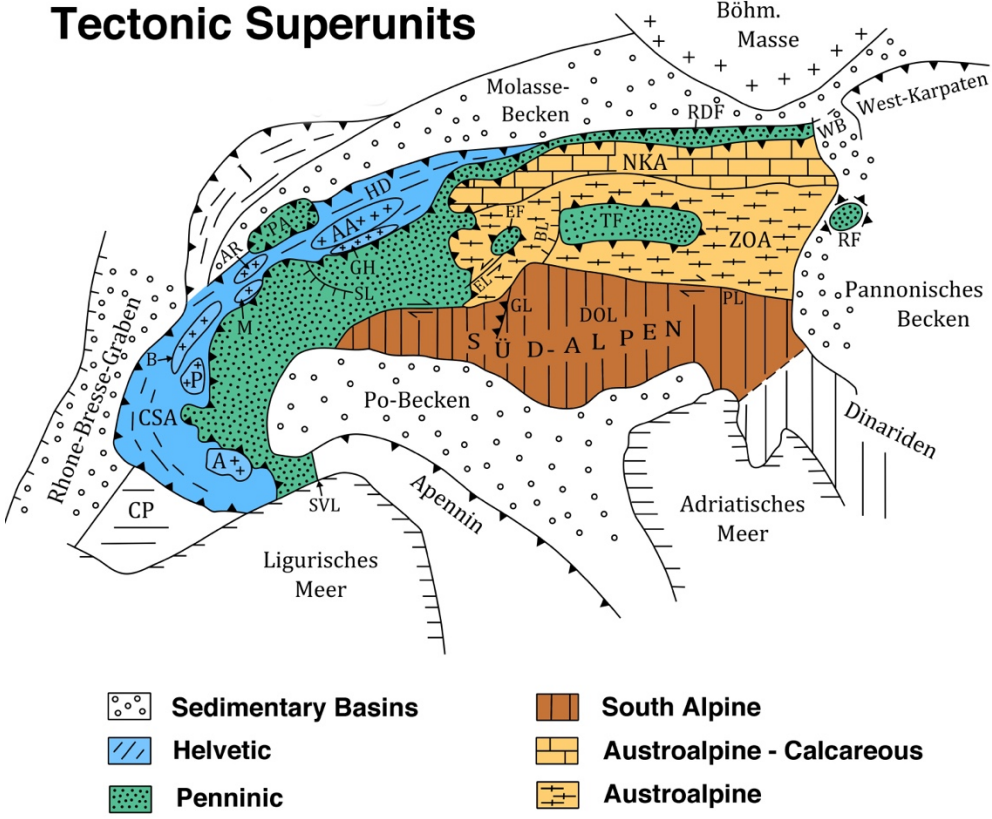


Modern day tectonic forces in the Mediterranean region



Development of an overthrust fault. A. Horizontal strata before tectonic compression. B. Anticline-syncline development as compression folds strata. C. One dominant fold begins to overturn, initiating a rupture in the strata (fault). D. Overthrust fault develops, as detached block of crust overrides stationary block, thus placing older strata on top of younger strata.

### Tectonic Superunits



Distribution of Tectonic Superunits in the Alps