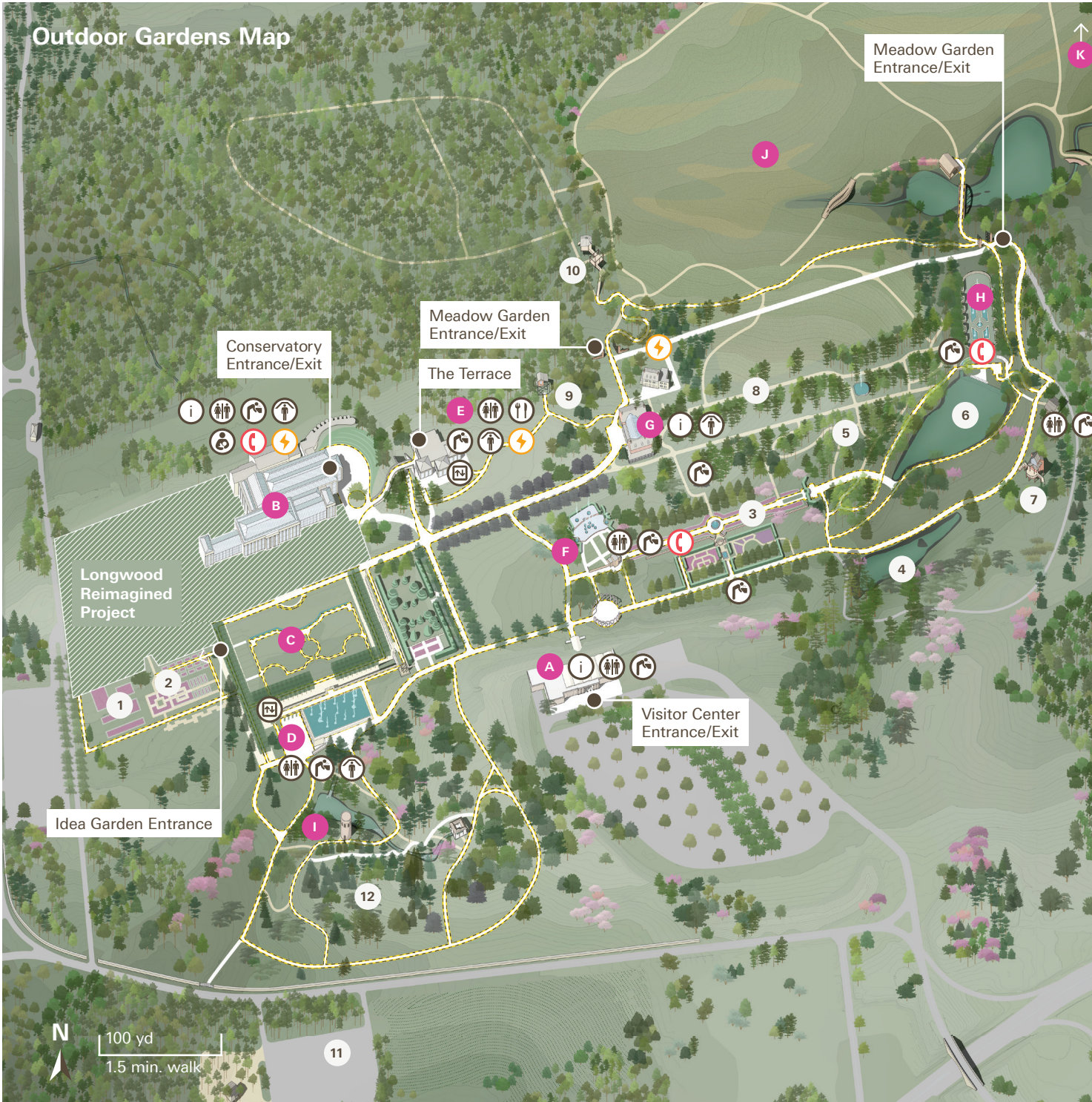


Longwood Gardens – A Close Up Look

Interesting Facts About Longwood Gardens

- Longwood Gardens started off as a 15-acre arboretum that became known as Pierce's Park. Currently, it consists of 1,077 acres of woodlands, meadows, landscaped outdoor gardens, greenhouses, and fountains.
- When it opened in 1921, Pierre du Pont gave it the name Longwood Gardens because it was located in a section of Pennsylvania known as Long Woods, which was once a stop on the Underground Railroad.
- Prior to the current renovation project, there were 4.5 acres of heated greenhouses, including the main show greenhouse called the Conservatory. This location housed over 4,600 different types of plants.
- Pierre du Pont was fascinated with water features and fountains. He toured Europe extensively in the 1920s looking for ideas for his new gardens. Look for the many different types of water features in this tour.
- The du Ponts loved hosting social events at Longwood Gardens. A tradition began where guests would bring trees and plants from around the world as gifts to their hosts.
- This tradition is how Longwood Garden's amazing orchid collection began in 1922. Mrs. Dimmick of Scranton, Pennsylvania gifted 12 of her *Cattleya* orchids to Mrs. Alice du Pont.
- Longwood's Conservation, Plant Breeding and Collections Department actually began in 1956 when the United States Department of Agriculture (USDA) approached them with a project. Longwood worked with the USDA over the next 15 years conducting 13 separate plant explorations throughout the world.
- Since 1956, Longwood has conducted extensive research and breeding on several different plant species. Look for some of these in this tour: Longwood Winter Green clivia, Longwood Hybrid Cineraria, and *Victoria* 'Longwood Hybrid' water lily.
- Longwood has an extensive native orchid research and conservation program which dates back to 1923 when Pierre du Pont made the first native orchid addition to the garden.
- Pierre du Pont was so enthralled by a chimes tower he saw on one of his trips to France; that in 1929, he built one at Longwood. The initial 25 chimes were eventually replaced by an electric carillon that now plays concerts.
- Also in 1929, Mr. du Pont bought a massive 10,010 pipe organ. It took 14 train cars to deliver it and a 72-horsepower blower motor to operate. Organ concerts are scheduled throughout the year.
- Longwood is very well known for its performing arts schedule which occurs both indoors and outside throughout the year.

Outdoor Gardens Map



Garden Features

- A Visitor Center and The Garden Shop
- B Conservatory (see back page for map)
- C Main Fountain Garden
- D Historic Pump Room & Gallery
- E The Terrace: The Café, 1906, and Beer Garden
- F Open Air Theatre
- G Peirce-du Pont House
- H Italian Water Garden
- I Chimes Tower
- J Meadow Garden
- K Webb Farmhouse & Galleries

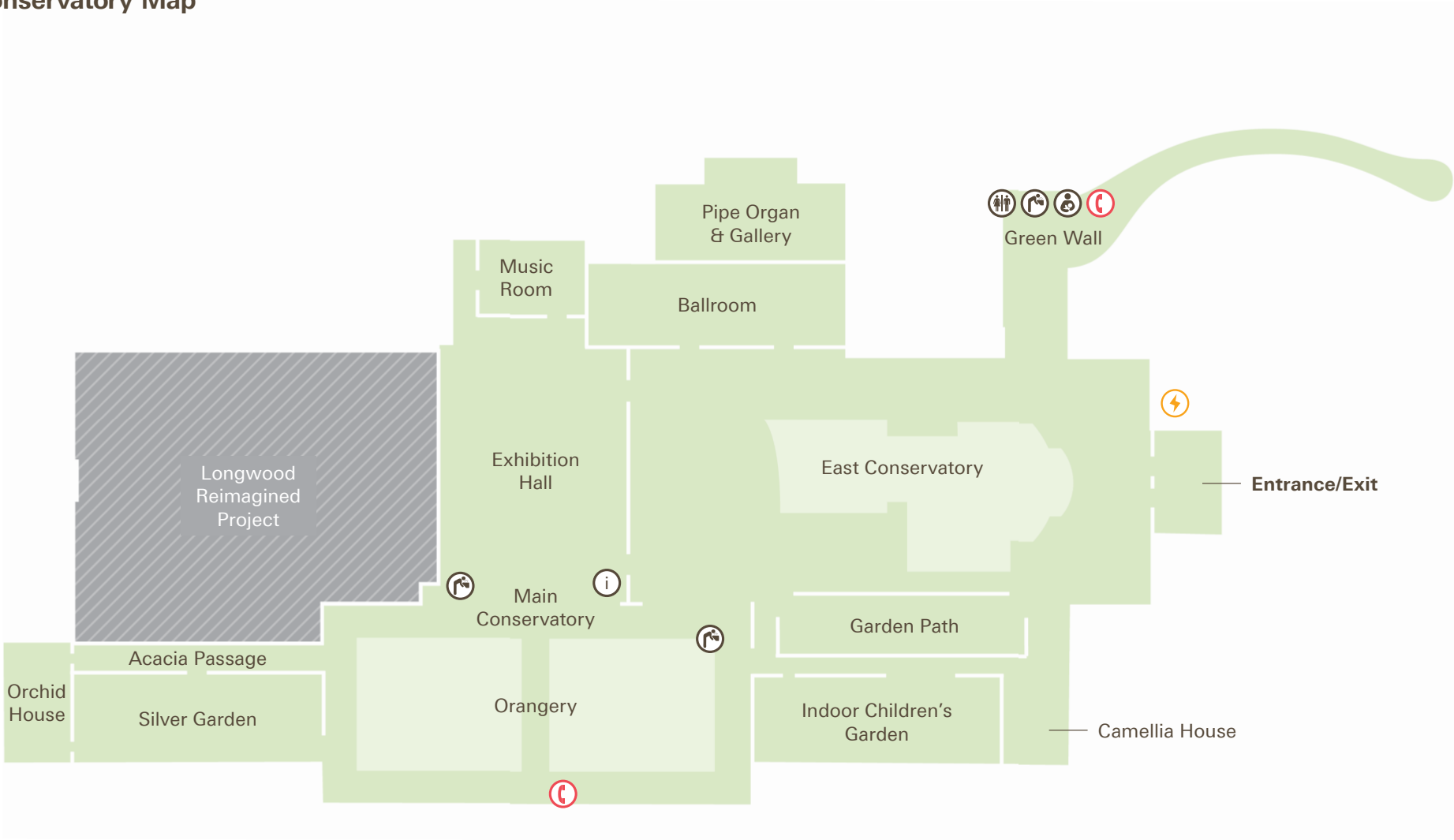
- 1 Idea Garden
- 2 Children's Corner
- 3 Flower Garden Walk
- 4 Small Lake
- 5 Peirce's Woods
- 6 Large Lake
- 7 Canopy Cathedral Treehouse
- 8 Peirce's Park
- 9 Birdhouse Treehouse
- 10 Lookout Loft Treehouse
- 11 Picnic Area*
- 12 Oak and Conifer Knoll

*The Picnic Area and outdoor drinking fountains are open April–October. Check the Visitor Center for operating information the day of your visit. Please plan on using the Picnic Area either before or after your visit.







Icon Key

- Public Restrooms
- Drinking Fountain*
- Dining
- Emergency Phone
- Elevators
- Information Desk
- Emergency Shelter
- Wheelchair & Scooter Accessible Path
- Scooter Charging Station
- Mother's Room
- Gardens are smoke- and vape-free.

Conservatory Map



See what's happening in our Gardens today! Scan the code to learn more about today's programs and events, or visit longwoodgardens.org/today.

-  Public Restrooms
-  Drinking Fountain
-  Emergency Phone
-  Information Desk
-  Scooter Charging Station
-  Mother's Room