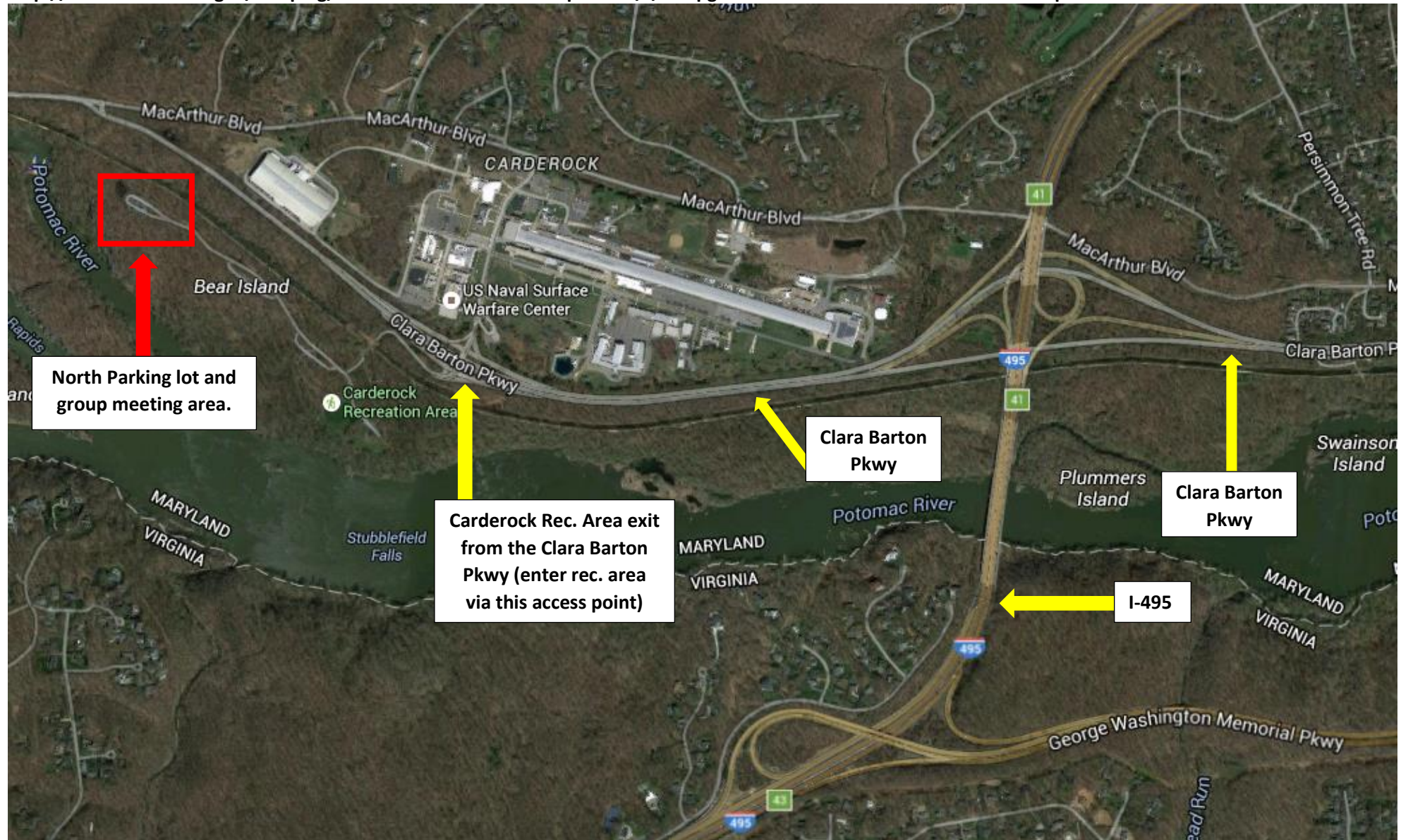


## Spring Wildflowers Along the C&O Canal; Carderock Recreation Area

Entering Carderock: From the access road from the Clara Barton Parkway you will curve right and go alongside then under the canal. After passing under the canal, at the "T" make a RIGHT onto the park service road and go to the large parking area at the very end, passing 2 smaller lots on your left. Please reference the maps for the visual directions and also the locational directions taken from the recreation area's website at the end of this document.

Additional park information can be found at:

<http://www.recreation.gov/camping/carderock-recreation-area-pavilion/r/campgroundDetails.do?contractCode=NRSO&parkId=111899>







North Parking lot and group meeting area.

Park Service Road

Carderock Recreation Area  
A waterfront area with hiking trails

## Getting There:

**GPS Info.** (Latitude, Longitude):

38.97167, -77.19972

38°58'18"N, 77°11'59"W

Carderock Pavilion has no street address, search Carderock Recreation Area with Google Maps or follow the directions below.

From I-495 in Maryland:

1. Take Exit 41 toward Carderock/Great Falls.
2. Merge onto the Clara Barton Pkwy and continue 1 mile to the Carderock exit (on the right is the David Taylor Model Basin – 9500 MacArthur Blvd., West Bethesda, MD 20817).
3. Take the Carderock exit and at the stop sign, turn left to cross over the Clara Barton Pkwy. Follow the road until you reach a second stop sign.
4. Turn left for parking lot "A" or turn right for parking lot "B" and the restrooms. (The pavilion is located between the two parking lots.)

From I-495 in Virginia:

1. Take Exit 41 (Carderock/Glen Echo) from the American Legion Bridge and at the fork, bear left toward Great Falls/Carderock.
2. Merge onto the Clara Barton Pkwy and continue 1 mile to the Carderock exit (on the right is the David Taylor Model Basin – 9500 MacArthur Blvd., West Bethesda, MD 20817).
3. Take the Carderock exit and at the stop sign, turn left to cross over the Clara Barton Pkwy. Follow the road until you reach a second stop sign.
4. Turn left for parking lot "A" or turn right for parking lot "B" and the restrooms. (The pavilion is located between the two parking lots.)

From Washington (Georgetown):

1. From the intersection of "M" Street and Key Bridge, go west for approximately .5 miles and bear left onto Canal Road.
2. Stay straight on Canal Road which turns into the Clara Barton Pkwy and follow the Clara Barton Pkwy for approximately 9 miles to the Carderock exit (on the right is the David Taylor Model Basin – 9500 MacArthur Blvd., West Bethesda, MD 20817).
3. Take the Carderock exit and at the stop sign, turn left to cross over the Clara Barton Pkwy. Follow the road until you reach a second stop sign.
4. Turn left for parking lot "A" or turn right for parking lot "B" and the restrooms. (The pavilion is located between the two parking lots.)

Directions from I-270 on reverse side.

From I-270:

1. Take I-270 South toward Washington.
2. Keep right to take I-270 Spur South toward I-270/Washington/I-495/Northern Virginia.
3. I-270 Spur South becomes I-495 South/Capital Beltway.
4. Take Exit 41 toward Carderock/Great Falls.
5. Merge onto the Clara Barton Pkwy and continue 1 mile to the Carderock exit (on the right is the David Taylor Model Basin – 9500 MacArthur Blvd., West Bethesda, MD 20817).
6. Take the Carderock exit and at the stop sign, turn left to cross over the Clara Barton Pkwy. Follow the road until you reach a second stop sign.
7. Turn left for parking lot "A" or turn right for parking lot "B" and the restrooms. (The pavilion is located between the two parking lots.)