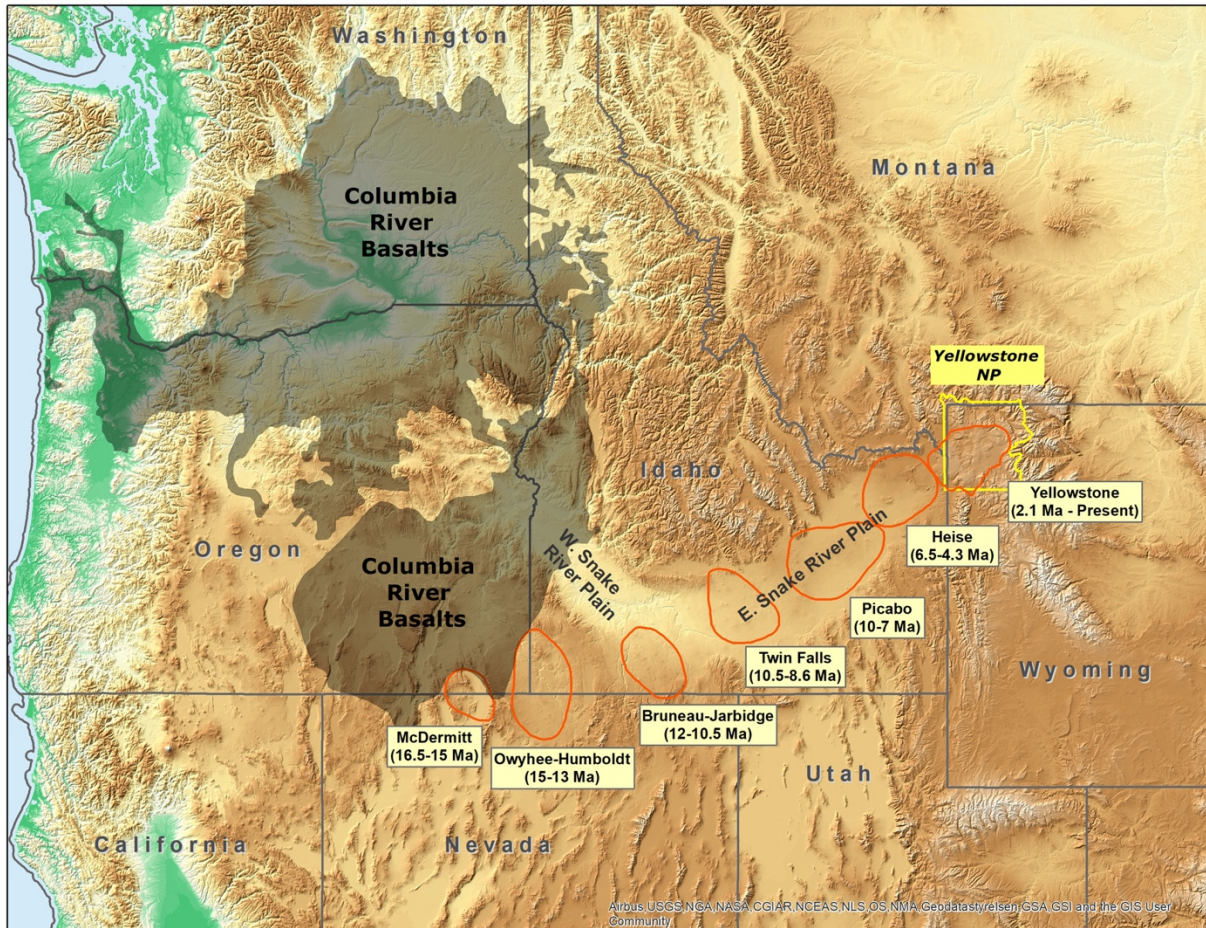
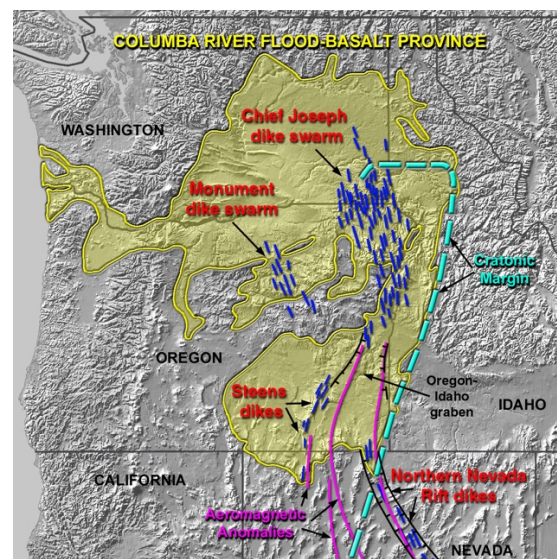
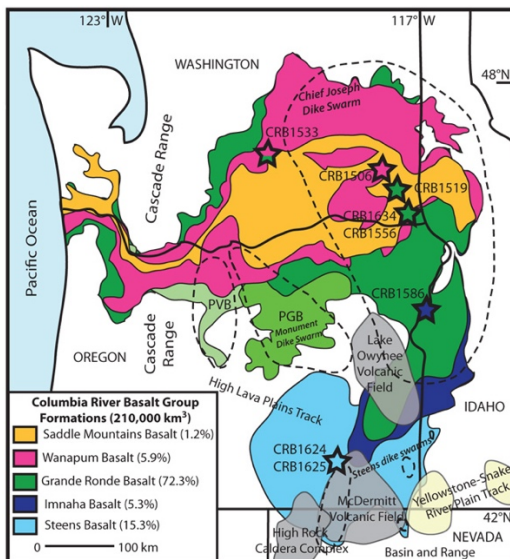


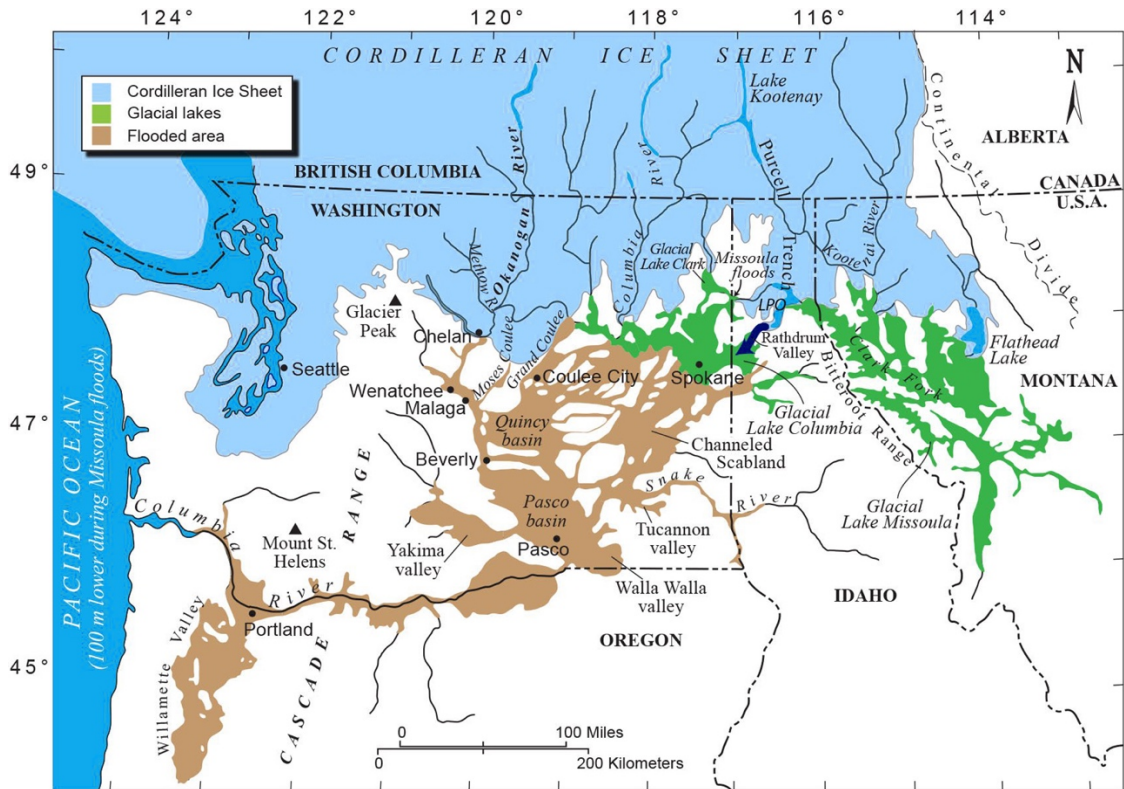
# Great Floods of the Pacific Northwest: Lava and Water



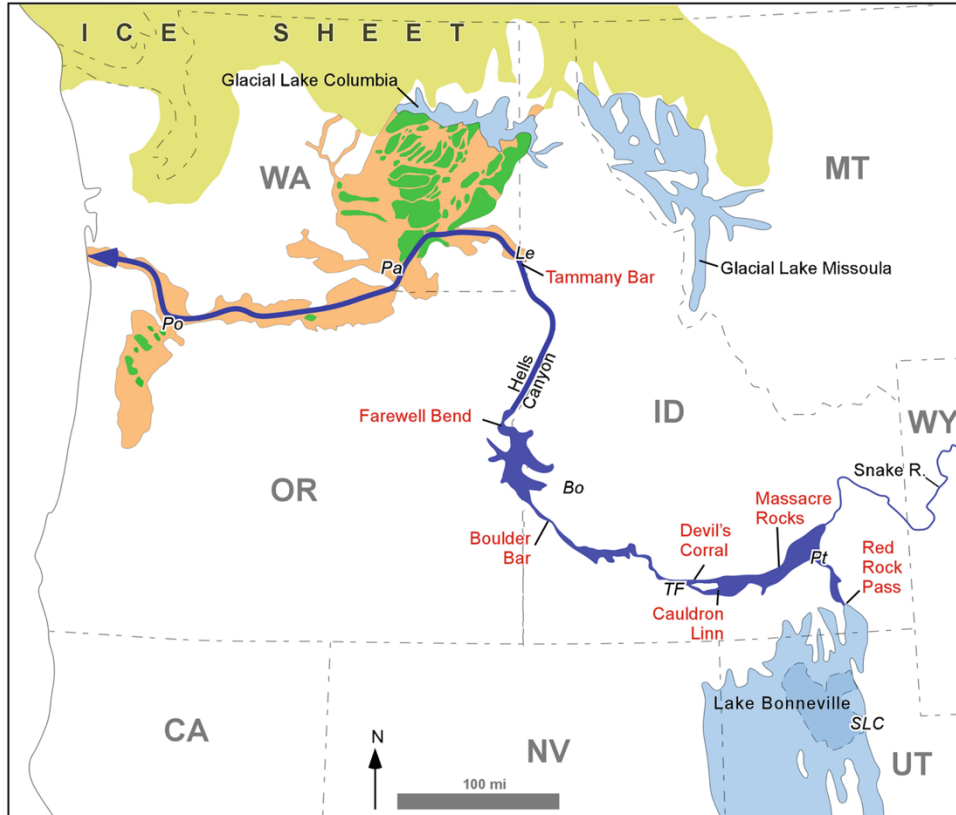
Map showing the extent of the Columbia River basalt province, mostly emplaced between 17-15 million years ago. How does it relate to the Yellowstone Hot Spot??







Glacial Lake Missoula flood map down the Columbia River gorge.



Lake Bonneville flood map into the Columbia River system