

Beltway/I-95, Exit-27 Carpool Parking

(The Carpool Lot can only be accessed from I-95 or the Beltway)

DIRECTIONS:

From SOUTHBOUND I-95: Take Exit 27 for I-495 West towards Silver Spring. Stay in the left lane of this 2-lane exit ramp. Take a left exit from this ramp for CARPOOL/WEIGH STATION.

From NORTHBOUND I-95/I-495 (Beltway Outer Loop): After passing Exit 25, the Beltway widens and the right 3 lanes are marked for I-95 NORTH. Stay in the left lane of this 3-lane ramp as it separates from the Beltway. Take an immediate left exit from this 3-lane ramp for CARPOOL PARKING.

From EASTBOUND I-495 (Beltway Inner Loop): Take Exit 27 for I-95 NORTH towards Baltimore. Stay in the right lane of this 2-lane exit ramp. Take a right exit from this ramp for PARK & RIDE/CARPOOL PARKING.

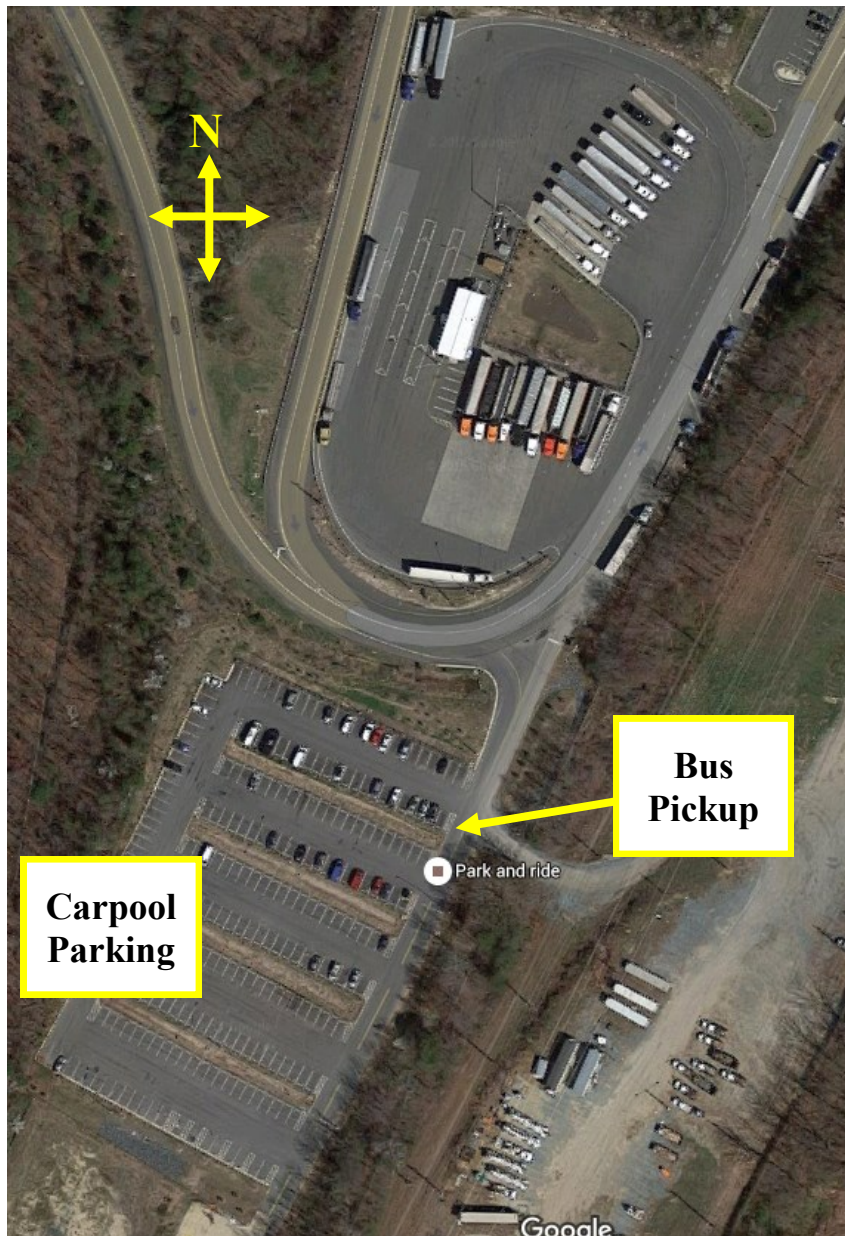
PARKING:

Follow the signs on RIGHT into the CARPOOL parking area adjacent to the truck inspection station.

Parking is free in this lot. For more information, please visit <http://www.princegeorgescountymd.gov/sites/publicworks/Transit/ParkAndRide/Pages/default.aspx>

BUS PICK-UP:

Wait for the EYRE bus on the grass island closest to the entrance.



I-495, Exit 27 Carpool Parking Lot—Wide View

