

# Wiehle-Reston East Directions

## **DRIVING DIRECTIONS:**

The Wiehle-Reston East Metro Park & Ride Garage is north of VA-267, west of Wiehle Ave, and accessed from Reston Station Blvd. There is signage for the Park & Ride Garage.

**From EASTBOUND VA-267:** Take Exit 13 for Wiehle Ave. Turn left onto Wiehle Ave. At the second traffic light turn left onto Reston Station Blvd. Turn LEFT at the SECOND traffic light (Nordine Salon & Day Spa will be on your left when at that traffic light). Continue into the "PARK & RIDE" Garage. (Do NOT turn left at the FIRST traffic light into the "ParkX" garage.)

**From WESTBOUND VA-267:** Take Exit 13 for State Rte 828/Wiehle Ave. Turn right onto Wiehle Ave. At the first traffic light turn left onto Reston Station Blvd. Turn LEFT at the SECOND traffic light (Nordine Salon & Day Spa will be on your left when at that traffic light). Continue into the "PARK & RIDE" Garage. (Do NOT turn left at the FIRST traffic light into the "ParkX" garage.)

**From NORTHBOUND on Wiehle Ave:** Turn LEFT onto Reston Station Blvd. Turn LEFT at the SECOND traffic light (Nordine Salon & Day Spa will be on your left when at that traffic light). Continue into the "PARK & RIDE" Garage. (Do NOT turn left at the FIRST traffic light into the "ParkX" garage.)

**From SOUTHBOUND on Wiehle Ave:** Turn RIGHT onto Reston Station Blvd. Turn LEFT at the SECOND traffic light (Nordine Salon & Day Spa will be on your left when at that traffic light). Continue into the "PARK & RIDE" Garage. (Do NOT turn left at the FIRST traffic light into the "ParkX" garage.)

## **PARKING:**

In the PARK & RIDE garage, park on PARKING LEVEL G7, the overnight and long-term parking level. \*\*Remember where you parked! Note the parking level and the markings on the closest pillar.\*\* Parking at Wiehle-Reston East Metro Garage is \$4.95 per day – collected on exit Monday through Friday. For parking information please visit [www.wmata.com](http://www.wmata.com) or call Metro Customer Information at 202.637.7000.

## **EYRE BUS PICKUP:**

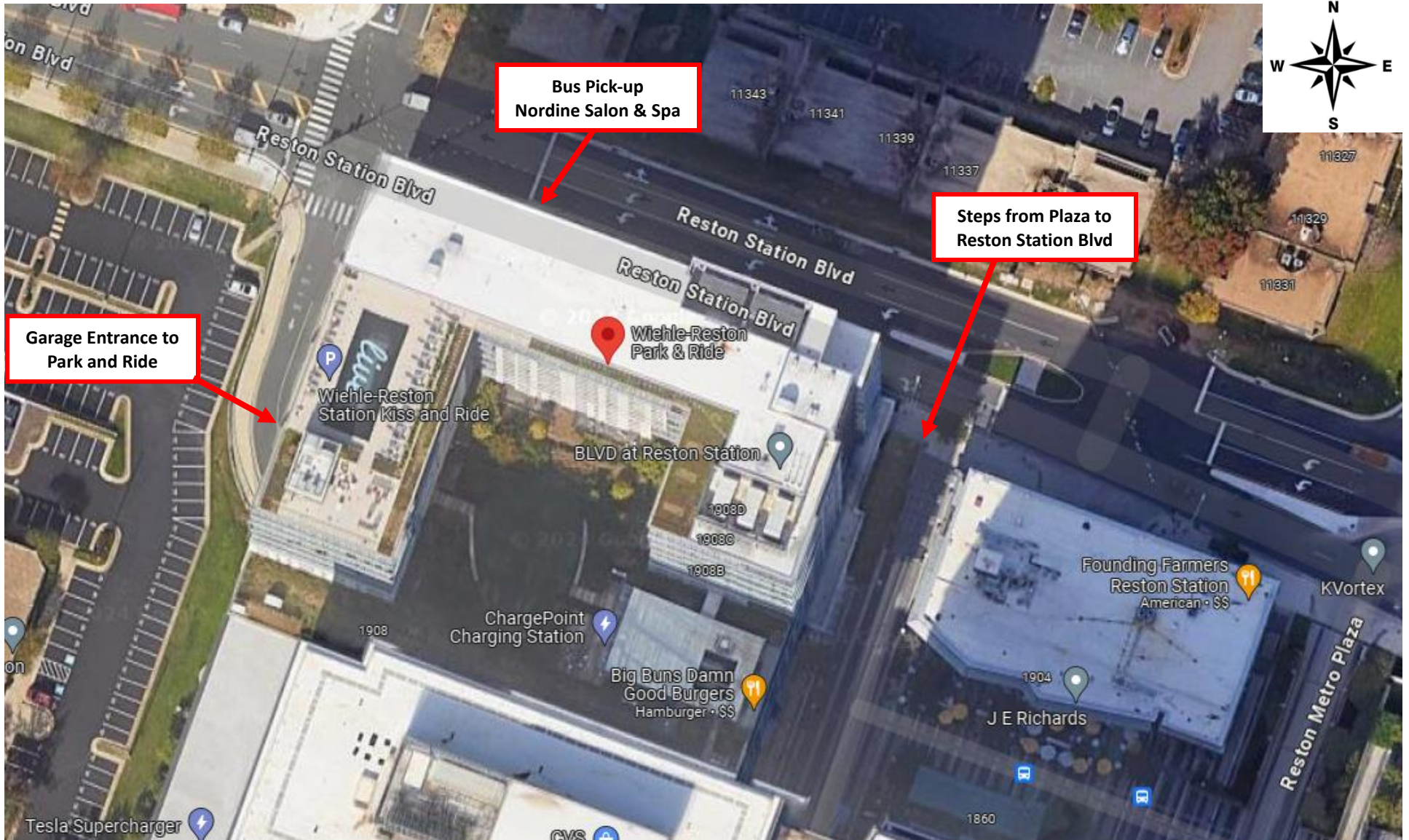
In the garage take either elevator to P1 (Plaza Level). On the north side of the open plaza, head to the left of FOUNDING FARMERS restaurant and down a few steps to the sidewalk on Reston Station Blvd. On the sidewalk, turn left and walk a few yards to the front of NORDINE SALON & DAY SPA where the Eyre bus will pickup and dropoff. If the weather is inclement you can wait under cover just inside the BUSES ONLY entrance very close to NORDINE.

## **METRO DIRECTIONS (SILVER LINE to Wiehle-Reston East station):**

After the exit gates you'll see the "EXIT" and "BUS" signs with directional arrows above the Metro fare card machines. Take the left exit titled "NORTH ENTRANCE" and follow the pedestrian bridge into Reston Station. When you exit the bridge, in the open plaza, head to the left of FOUNDING FARMERS restaurant and down a few steps to the sidewalk on Reston Station Blvd. On the sidewalk, turn left and walk a few yards to the front of NORDINE SALON & DAY SPA where the Eyre bus will pickup and dropoff. If the weather is inclement you can wait under cover just inside the BUSES ONLY entrance very close to NORDINE.

# Wiehle-Reston East Directions

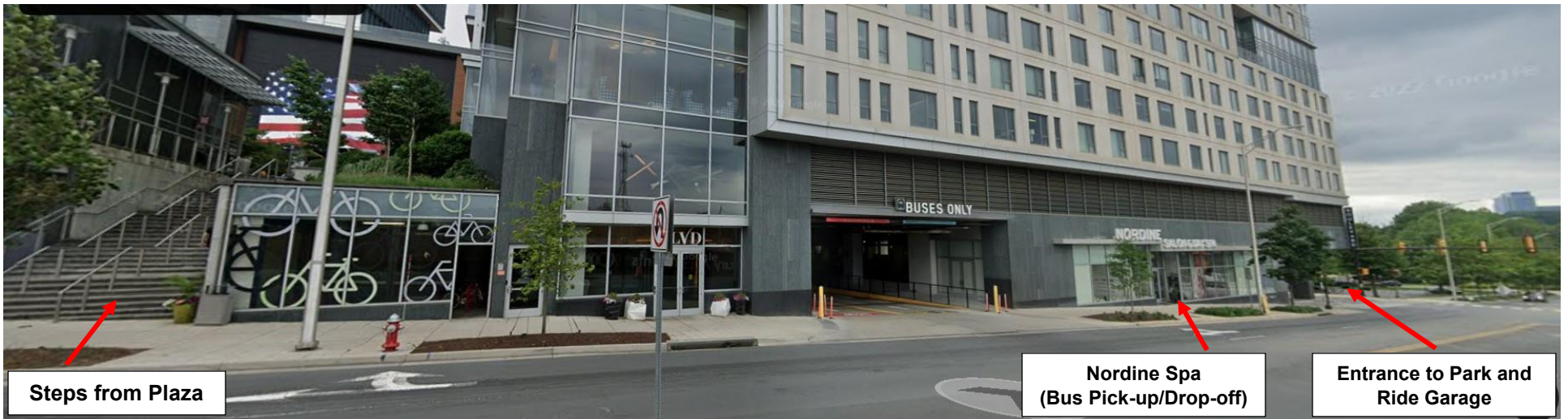
Google Maps Pin to Park & Ride Garage Entrance: <https://maps.app.goo.gl/XVDoLJ1kZ9NwXJXSA>





Park and Ride Entrance

# Wiehle-Reston East Street Level Location Photos



Steps from Plaza

Nordine Spa  
(Bus Pick-up/Drop-off)

Entrance to Park and  
Ride Garage