

Beltway/I-95, Exit-27 Carpool Parking

(The Carpool Lot can only be accessed from I-95 or the Beltway)

DIRECTIONS:

From SOUTHBOUND I-95/NORTHEAST BOUND I-495 Beltway: From I-495/Beltway, keep right at the fork for the 270 spur to continue on I-95/Beltway towards Silver Spring. Use the right lane to take Exit 27 for I-95 N toward Baltimore. Use the right lane to exit for WEIGH STATION/PARK & RIDE.

From NORTHBOUND I-95/I-495 (Beltway Outer Loop): Use second lane from the right at Exit 27 to take on I-95/I-495 WEST towards Silver Spring/Bethesda. Take the left exit for the WEIGH STATION. Keep left again for the CARPOOL PARKING.

PARKING:

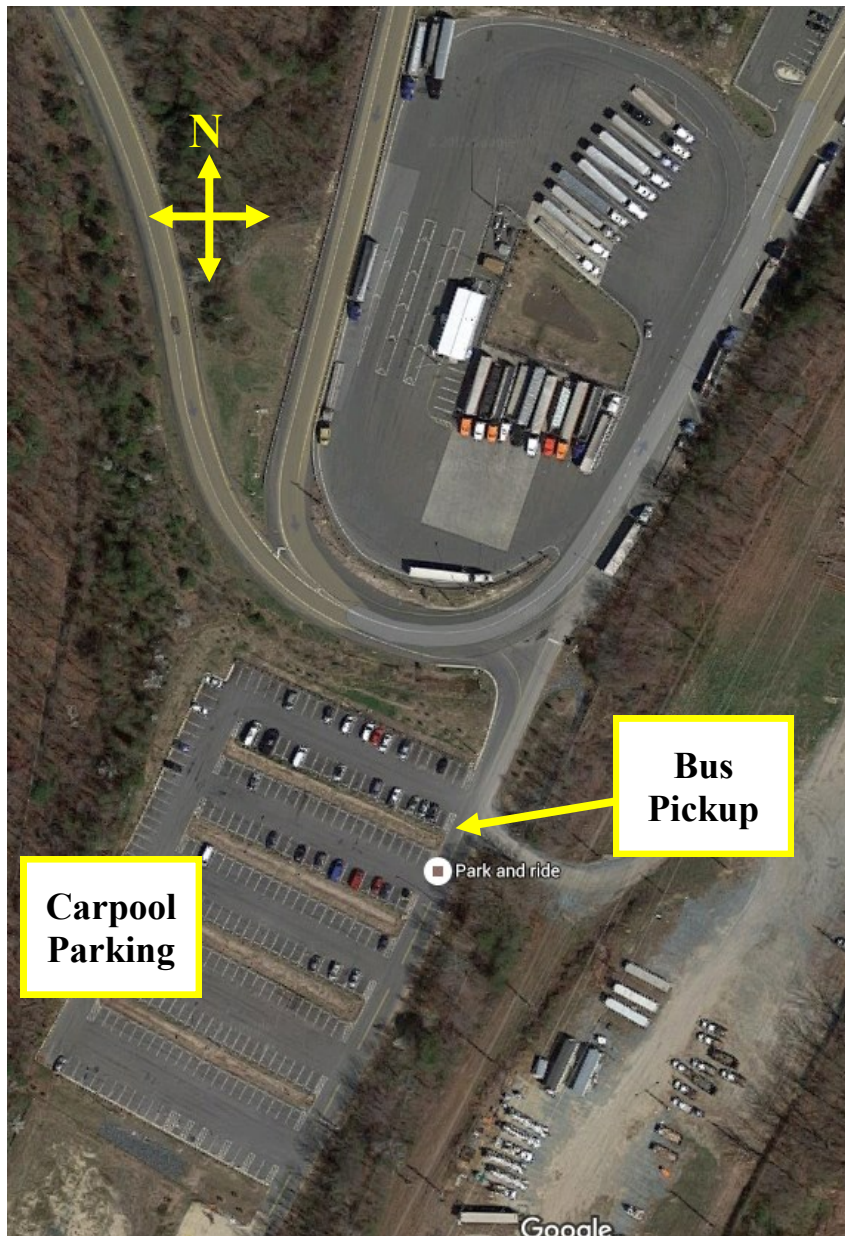
Follow the signs on RIGHT into the CARPOOL parking area adjacent to the truck inspection station.

Parking is free in this lot. For more information, please visit

<https://maryland.maps.arcgis.com/apps/webappviewer/index.html?id=346cc9c1f3b949b5a5104e0303129a95>

BUS PICK-UP:

Wait for the EYRE bus on the grass island closest to the entrance.



I-495, Exit 27 Carpool Parking Lot—Wide View

