

# Vienna Metro South-Side Kiss & Ride

## Interstate-66, Exit 62 & Virginia-243/Nutley Street

### DIRECTIONS:

**From WESTBOUND I-66:** Exit 62 (VA-243, Nutley St.). Follow signs for Nutley St SOUTH towards Fairfax. On southbound Nutley St. turn right at the first traffic light and follow Saintsbury Dr. into the Metro Station.

**From EASTBOUND I-66:** Exit 62 (VA-243, Nutley St.). Follow signs for Nutley St. SOUTH towards Fairfax.

Watch for a right exit from the ramp for METRO PARKING. (If you miss the Metro Parking exit, you will be on southbound Nutley St. Turn right at the first traffic light and follow Saintsbury Dr. into the Metro Station.)

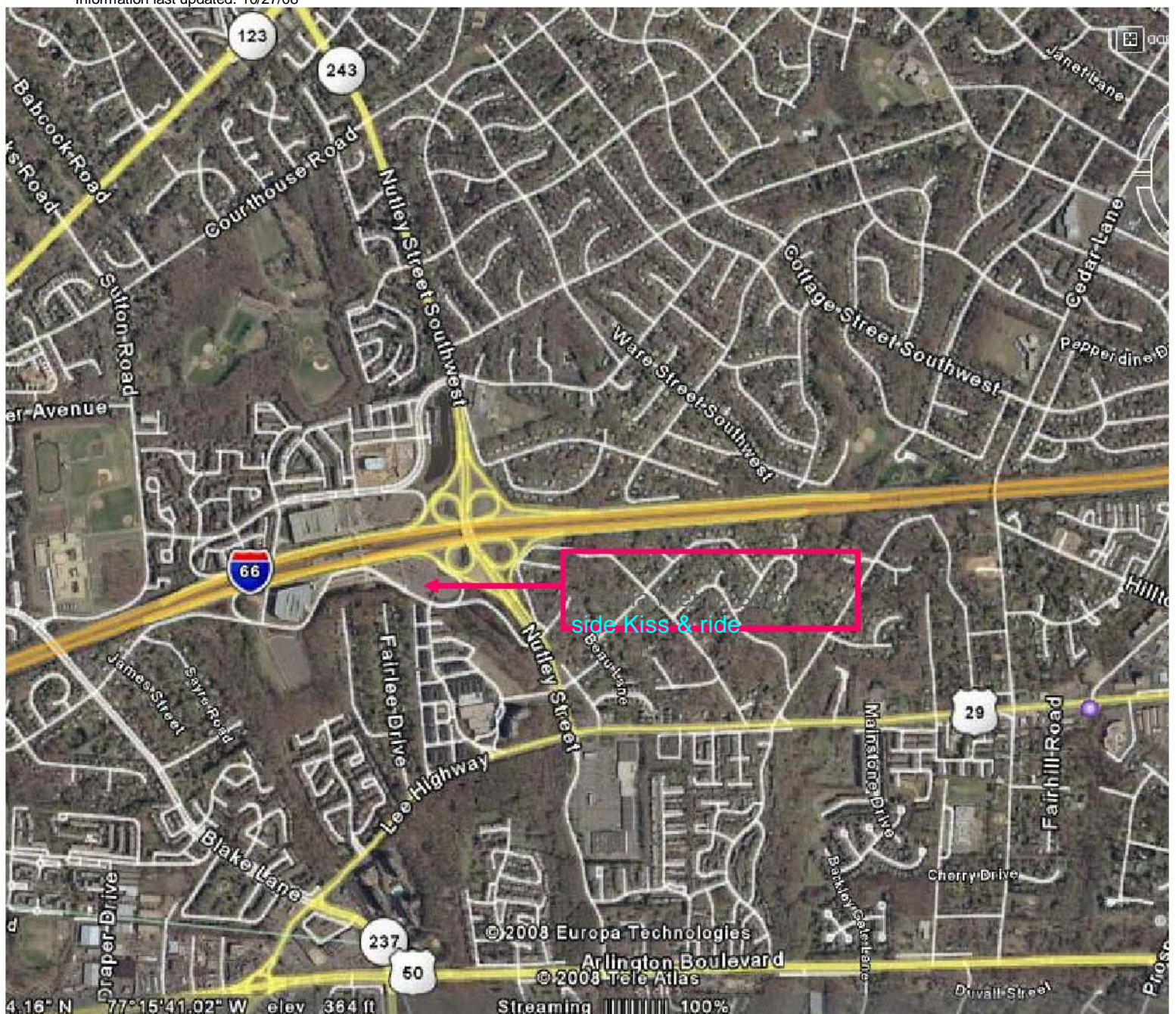
### PARKING:

The South-Side Vienna Metro Parking is south of I-66 and west of Nutley Street. Follow signs to KISS & RIDE parking. Parking at Metro-operated lots is free on weekends and federal holidays. For weekday parking information please visit [www.wmata.com](http://www.wmata.com) or call Metro Customer Information at 202.637.7000.

### BUS PICK-UP:

Wait for the EYRE bus at one of the first of a long line of shelters adjacent to the Kiss & Ride lot.

Information last updated: 10/27/08



Vienna Metro, South-side Kiss & Ride Kiosk (close-up view)

